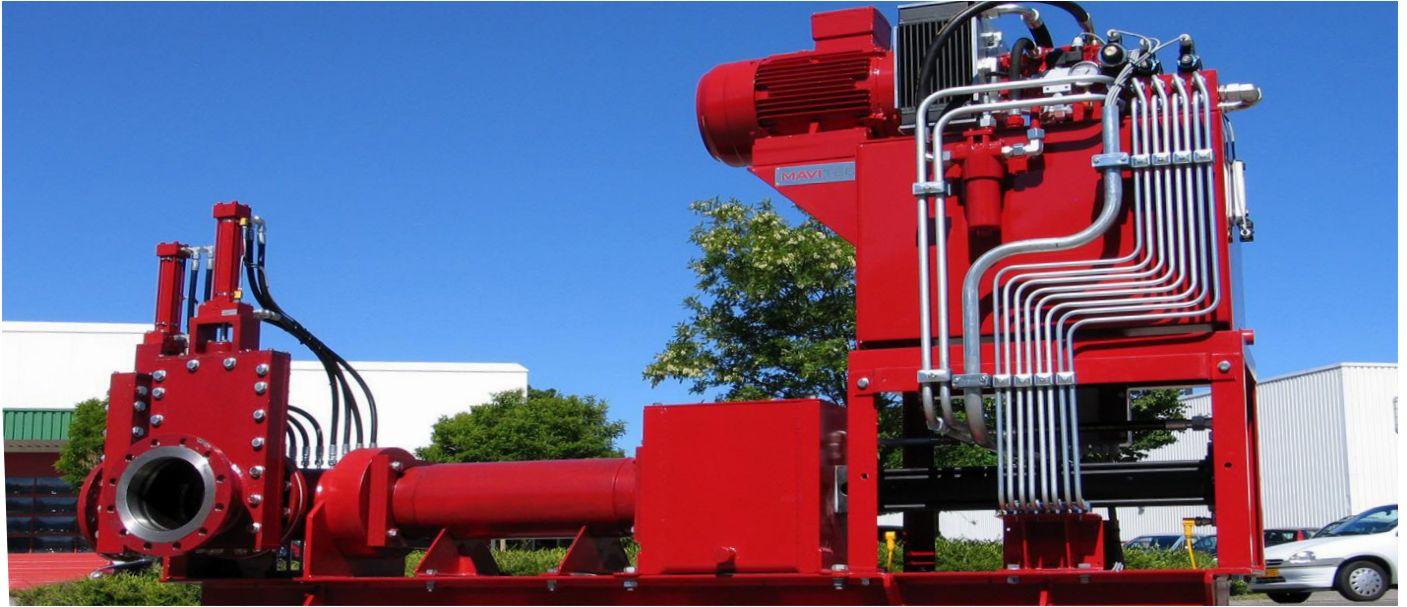


T-Pump



The T-Pump is designed for efficiently handling viscous materials such as crushed shop returns, sludges, and raw materials. Our high-performance Piston Pump features a durable design with a wear-resistant material cylinder, internally hard-chromed, and a one-piece aluminum piston with 3" Urethane seals. Easy maintenance is ensured with a connecting rod assembly and a water box for hydraulic component isolation. The system is driven by a main hydraulic cylinder, securely frame-mounted on a carbon steel base with protective guards for reliable operation. The hydraulic power unit includes a motor, variable displacement pump, control valves, water-to-oil heat exchanger, level indication, oil filter, reservoir, and proportional flow control valve.

Features:

- Hydraulically operated for seamless functionality
- Robust heavy-duty execution for durability
- Streamlined and low-maintenance design for efficiency
- Compact size for space-efficient installation
- Low installed kW
- Unique water box system prevents product contamination

Capacity:

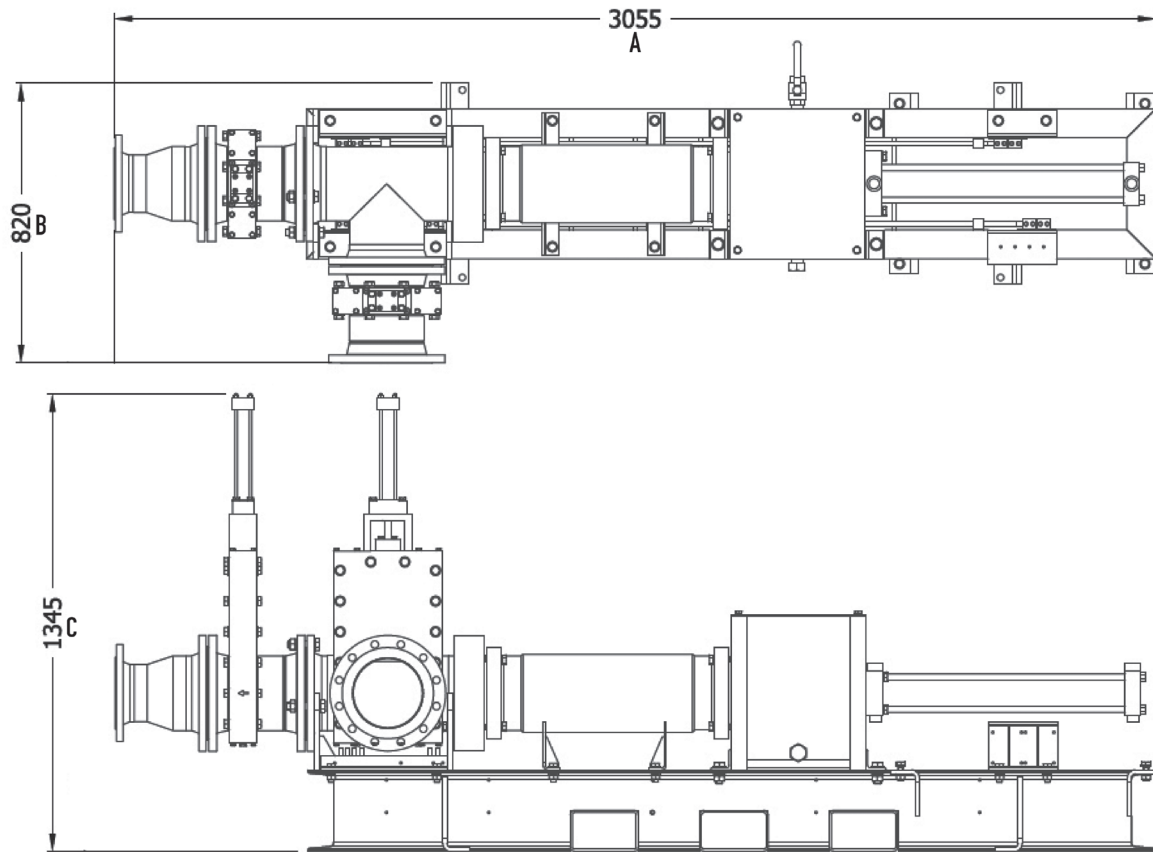
- Up to 20.000kg/hr



Heavy duty execution

MAVITEC

T-Pump



*T-Pump 8†

T-Pump	Capacity	Power	Length (A)	Width (B)	Height (C)
model	kg/hr	kW	mm	mm	mm
8	10.000	11	3055	820	1345
12	20.000	37	3055	820	1345

Please note that the data presented here is subject to change without notice due to ongoing product improvements.
For the most up-to-date specifications, we recommend contacting Mavitec B.V. directly.

MAVITEC

Maximize the value of your by-products!

Galileistraat 32 - 1704 SE Heerhugowaard - The Netherlands

Tel.: +31 (0)72 574 59 88 | E-mail: info@mavitec.com

www.mavitec.com