



Dupps Pump

**Moves any substance that
can fit into a pipeline.**

**Handles hot or cold
raw material or finished
product with no chance of
cross contamination.**

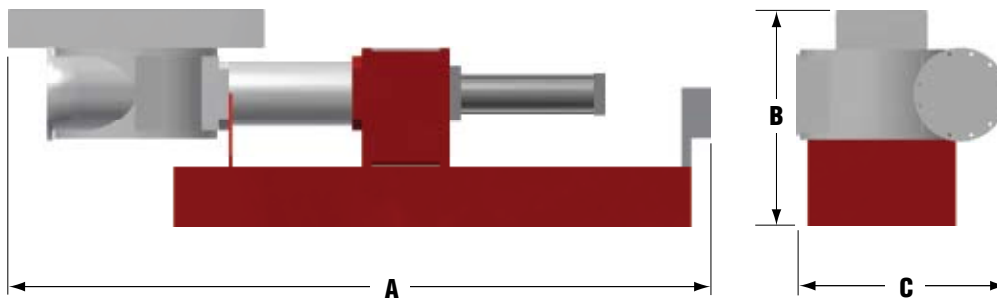
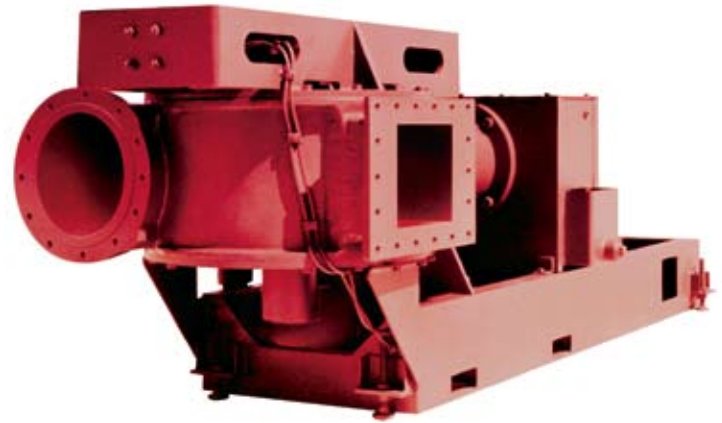


- Unlike any other pump, the Dupps Pump's unique, hydraulically-powered valve spade design prevents material back ups.
- Moves up to 70,000 lbs/hr (31,760 kg/hr) of by-products, including whole poultry offal and pre-crushed beef bones.
- The rugged Dupps Pump performs either simple transfer pumping or metering to replace less efficient, more costly material handling methods.
- Self-clearing, non-clogging valve opens and closes with each piston cycle, and the hardened spade has enough power to crush or shear most common materials.
- No pressure loss at low speeds; unique water box system prevents product contamination.

Dupps Pump

Moves any substance that can fit into a pipeline.

Handles hot or cold raw material or finished product with no chance of cross contamination.



Pump Size	A - Length	B - Height	C - Width	Approx. Weight	Approx. Capacity*
305 mm • 12"	3,607 mm • 142"	1,143 mm • 45"	1,194 mm • 47"	1,575 kg • 3,500 lbs	21,325 kg/hr • 47,000 lbs/hr
406 mm • 16"	3,734 mm • 147"	1,143 mm • 45"	1,194 mm • 47"	1,629 kg • 3,620 lbs	31,760 kg/hr • 70,000 lbs/hr

* Capacities are for sized raw material.

Due to ongoing product improvements, data shown here is subject to change without notice.

The Dupps Company



Germantown, Ohio U.S.A.
 Phone: 937/855-6555
 Fax: 937/855-6554
 E-mail: info@dupps.com

Visit www.dupps.com to explore the world's leading protein recycling systems, equipment and service.

© 2013 The Dupps Company Printed in U.S.A.