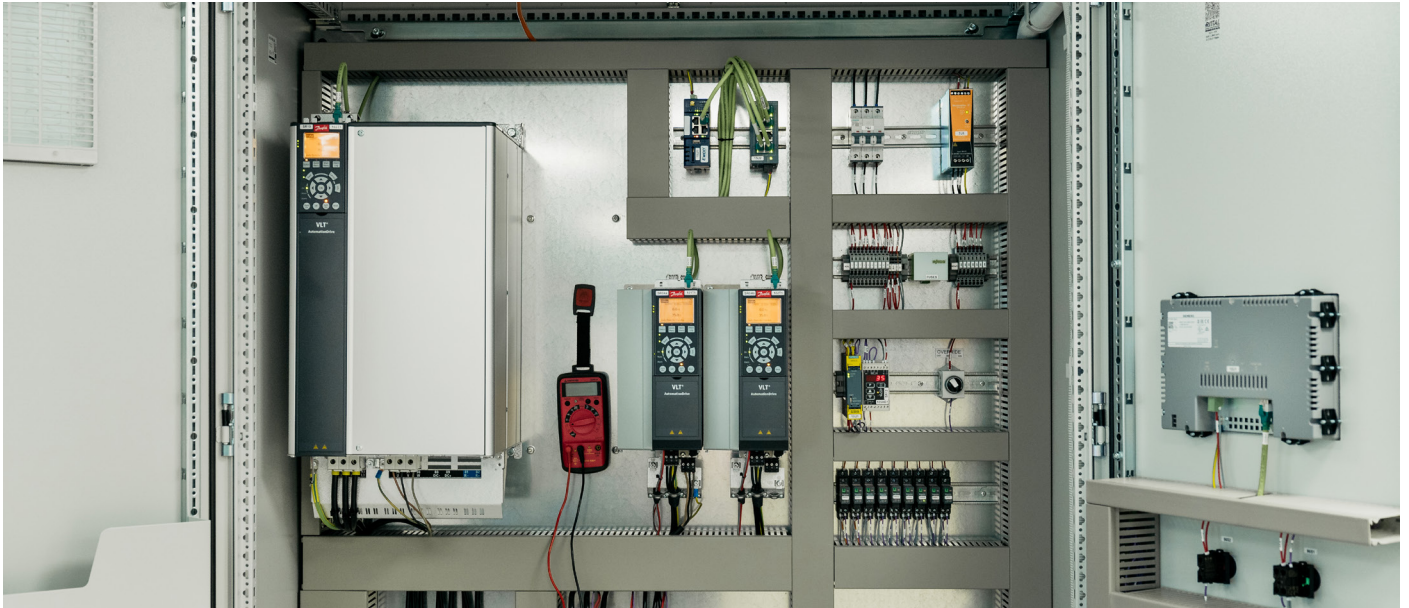


Control Panel



Due to our extensive experience in the field of panel construction, we are capable of offering a product range varying from a one switch panel to complex PLC, PC or touch screen controlled panels. Our standard product line consists of Siemens PLC and Siemens switchgear. However other brands are known to us and are therefore easily implemented in the panel required. All panels are engineered, constructed and commissioned in-house.

Features:

- Intuitive touchscreen or user interface for easy operation.
- Remote monitoring and control.
- Capability for remote monitoring and control of equipment.
- Ability to customize operational settings based on specific requirements.
- Logging of operational data and generation of reports for analysis.
- Integrated alarm system for real-time notification of issues.
- Integration with SCADA systems.



Touch screen control panel

MAVITEC

Control Panel

With all panels assembled in-house, we maintain a quality check on the components, utilizing the latest available technologies. Our panels adhere to European (IEC) and Dutch (NEN) regulations as standard, and we seamlessly implement specific country requirements, ensuring a product that aligns precisely with local regulations and customer needs.

Being a longstanding Intouch Wonderware and Wincc software partner, we excel in providing comprehensive visualizations of your processes on touchscreen and/or PC controls. This entire process is conducted in-house, allowing for seamless customization to meet your specific preferences.

Our panel constructors at Mavitec are at your service 24/7, ensuring the supplied equipment operates seamlessly. This commitment guarantees a trouble-free operation of your equipment, providing peace of mind and support around the clock.

At Mavitec, we don't just engineer solutions; we tailor precision to your specifications, ensuring a seamless and efficient operation of your processes.

Please note that the data presented here is subject to change without notice due to ongoing product improvements.
For the most up-to-date specifications, we recommend contacting Mavitec B.V. directly.



Maximize the value of your by-products!

Galileistraat 32 - 1704 SE Heerhugowaard - The Netherlands

Tel.: +31 (0)72 574 59 88 | E-mail: info@mavitec.com

www.mavitec.com